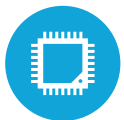




## HIGHLIGHTS



Up to an Intel i7 Kaby Lake Processor



Up to 32GB RAM



Supports Raid 0,1, 5, 10 with up to 4 Drives



Small Footprint



Multiple Port Options

# SPECIFICATIONS

## CPU PROCESSING

Intel Kaby Lake Series  
Intel® Celeron G3930TE Dual Core, 2.7Ghz  
Intel® Dual Core i3-7101TE, 3.4Ghz  
Intel® Dual Core i5-7500T, 2.7Ghz, up to 3.3Ghz  
Intel® Quad Core i7-7700T, 2.9Ghz, up to 3.8Ghz

Chipset: Intel Q170  
System Memory: 2xDDR4 2133Mhz Short Dimm (32GB Max)  
LAN: Intel LAN  
Graphics: Intel HD Graphics DX12

## CONTROL INDICATOR

Power Indicator: 1 LED  
Storage Activity: 1 LED

## STORAGE

4x2.5" Drives  
RAID 0, 1, 5 or 10  
NVMe Storage Optional

## POWER

Power Adapter: Built-in Mini-ITX power adapter, Autoswitching

## REAR I/O PORTS

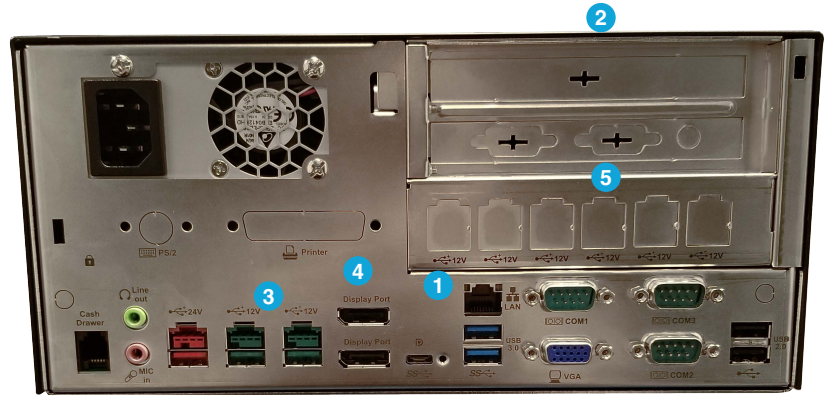
9 Total USB Ports:  
2x 3.0, 2x 2.0 (back)  
1x 3.0 (front)  
1x Type C  
2x Powered USB +12V  
1x Powered USB +24V  
Serial Ports: 3xDB9 with the power option  
LAN: 1x Gigabit LAN, RJ45  
VGA: 1  
Cash Drawer: 1x RJ11 (12/42 Cash Drawer Port)  
Display port: 2  
Audio Line-out: 1  
Audio Mic-in: 1

## EXPANSION SLOTS

1x PCIe x1  
1x PCIe x16  
m.2: For Wireless

## OPTIONAL PORTS

COM4/COM5/+12V out: 1  
Parallel Port: 1  
PS/2 Port: 1  
Powered USB Hub: 6x +12V (Different power adapter required)



## KEY FEATURES

1	Rich I/O Port Selection
2	RAID Support with Hot Swap (Behind front panel)
3	9 USB Ports (Including Powered USB)
4	Display Port, VGA, HDMI and DVI Support
5	Powered USB Hub Support

## ENVIRONMENT

Operating Temperature: 41°F ~ 105°C  
Operating Humidity: 20% ~ 80% RH non condensing  
Storage Temperature: 4°F ~ 140°F  
Storage Humidity: 20% ~ 85% RH non condensing

## OS SUPPORT

Linux, Windows 10 IOT, Windows 10 Professional

## SPECIFICATIONS

Dimensions: 10.4" x 11.8" x 5.2"  
Weight: 14.3 LBS